

DISTINCT[®] herbicide

In Roundup Ready Corn

Technical Information Bulletin



Tank Mix DISTINCT[®] with Glyphosate for:

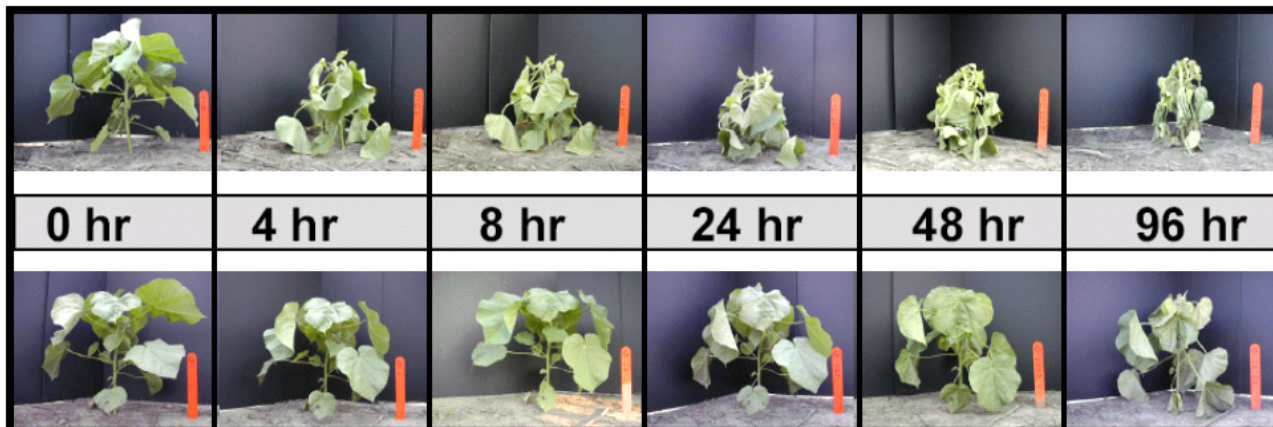
- + **Quicker Burndown**
- + **Better Control of Broadleaf Weeds**
- + **More Consistent Weed Control**



= Higher Corn Yields

Quicker Burndown:

Top row: DISTINCT 3 oz/a + glyphosate 4L 32 oz/a + NIS + AMS



Velvetleaf 18" at application
Applications made to field growing velvetleaf

BASF Research, 2005
Seymour, IL

Better Control of Broadleaf Weeds:

University experts have identified the following list of weeds as likely to escape a glyphosate alone program:

- | | | |
|-----------------------|-------------------------|-----------------|
| •Black Nightshade | •Giant Ragweed | •Velvetleaf |
| •Canada Thistle | •Kochia | •Waterhemp |
| •Common Lambsquarters | •Marestail | •Wild Buckwheat |
| •Dandelion | •Pennsylvania Smartweed | |

DISTINCT will control these weeds and more!!!

University trials confirm better weed control leads to higher corn yields!

Corn Yield Bu/a			
University Trial Results*	Glyphosate Alone	Distinct + Glyphosate	Distinct Advantage
Univ. of MN	143	163	+20
IA State Univ.	220	242	+22
Univ. of NE	219	238	+19
SD State Univ.	214	223	+9

*SD, IA & NE results from 2004, MN results from 2003.

Timing and Rate Recommendation

DISTINCT 3-4 oz/a
glyphosate* 16 oz/a
AMS 2.5 lb/a

*Add 0.25% NIS with non-loaded glyphosate formulations



Optimum timing: 4" to 12" Corn

Always Read and Follow label directions

Distinct is a registered trademark of BASF.

Roundup Ready is a registered trademark of Monsanto.

©2005 BASF Corporation. All Rights Reserved. 10-2005-19-78-106-08A